

SERIES OF WATER-PROOF HYBRID STEPPING MOTOR

防水系列混合式步进电机



基本参数 (General specifications):

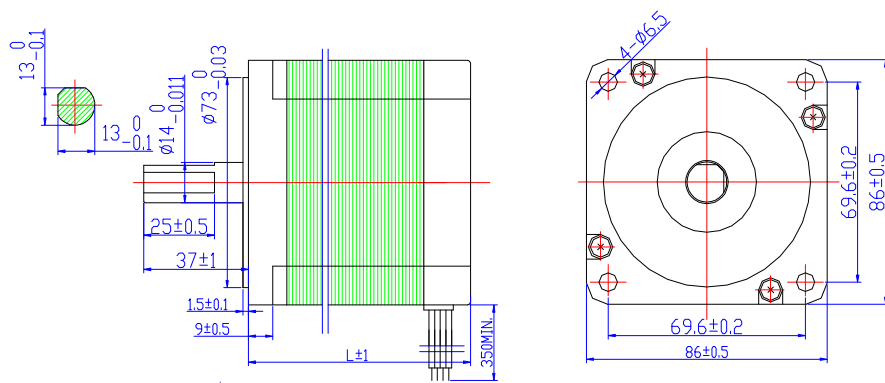
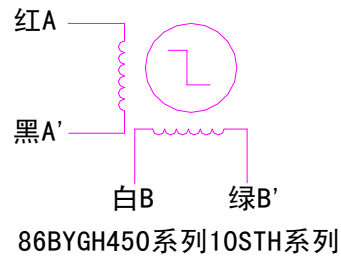
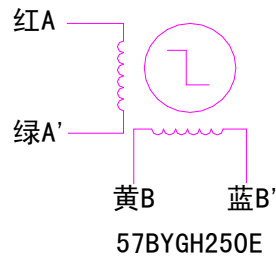
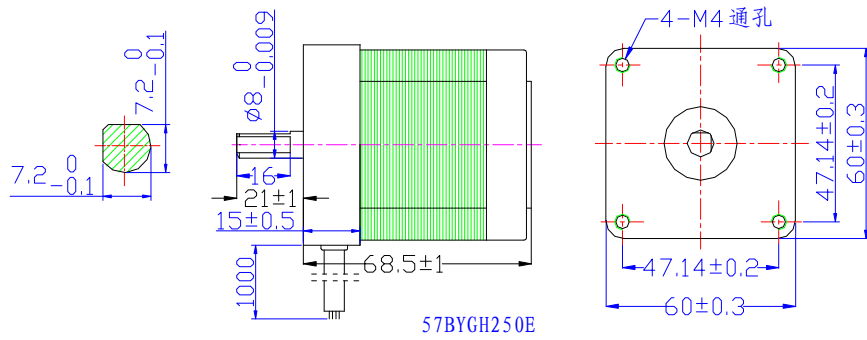
步距角 (step Angle) ---- 1.8° / 0.9° / 1.2° / 0.6° / 0.72° / 0.36° (整步 full / 半步 half)
 步距角精度 (Step Accuracy) ----- ±5% (整步 full, 空载 no load)
 温升 (Temperature Rise) ----- 85K 最大 Max (rated current, 2 phases on).
 环境温度 (Ambient Temperature Range) ----- -20°C ~ +50°C
 绝缘电阻 (Insulation Resistance) ----- 100MΩ Min. 500VDC
 绝缘介电强度 (Dielectric Strength) ----- 1000VAC 50Hz 1mA 1 Minute
 绝缘等级 (Insulation Class) ----- F 级 (155Class)
 径向跳动 (Shaft Radial Play) ----- 0.02mm Max (300N Load)
 轴向变形 (Shaft Axial Play) ----- 0.08 mm Max. (60N Load)
 最大径向力 (Max. radial force) ----- 220N (20mm from the flange)
 最大轴向力 (Max. axial force) ----- 60N
 旋转方向 (Rotation) ----- CW (See From Front Flange)

主要参数 (Electrical Specifications):

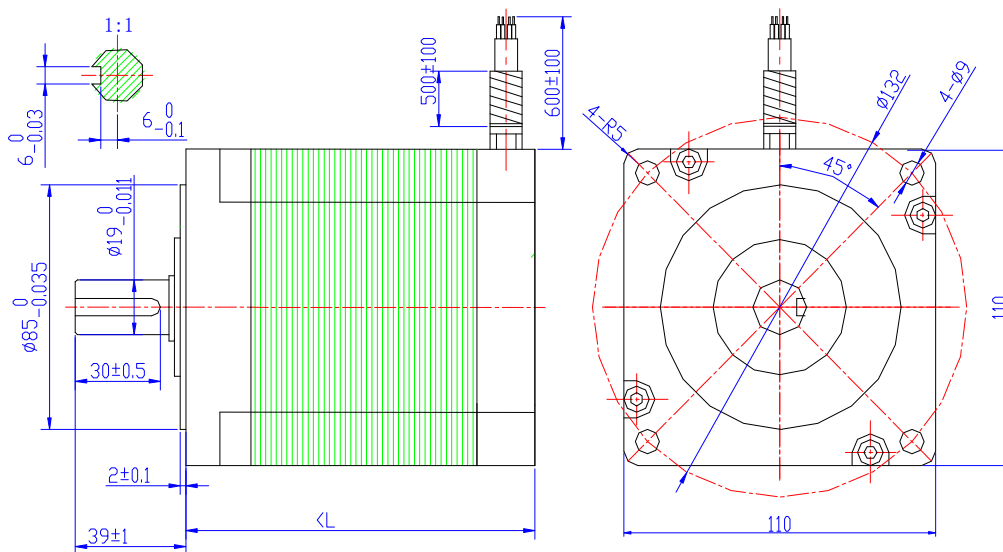
型号 Model	防水等级 IP	相数 Phases	保持转矩 Holding Torque (N.m)	电压 Rated Voltage (V)	电流 Rated Current (A)	电阻 Resist ance (Ω)	电感 Inductan ce (mH)	转动惯量 Rotor Inertia (kg.cm ²)	重量 Motor Weight (kg)
57BYGH250E	IP65	2	0.9	24~48	2	2.32	37.5	0.26	0.9
86BYGH450A-02M	IP65	2	2.6	80~325	3	1.2	4.0	1.0	2.1
86BYGH450B-02M	IP65	2	5.2	80~325	3	1.8	7.5	2.7	3.3
86BYGH450C-02M	IP65	2	7.8	80~325	4	1.7	7.0	4.0	4.0
110STH115-6004B	IP65	2	12	80~325	6	0.455	6.1	6.8	6
110STH150-6004F	IP65	2	20	80~325	6	1.0	17	10.9	8.4

*以上为代表性产品，可订购防水等级 IP68、双轴伸、高低温等

外形图 (Dimensions)



型号	86BYGH450A-02M	86BYGH450B-02M	86BYGH450C-02M
L	70.5	101.5	130.5



型号	110STH115-6004B	110STH150-6004F
L	115	150

运行矩频特性 (Pull-out Torque-pulse curve) :

型 号	驱动器电 压	运行矩频特性 (N. m/rps)
57BYGH250E	36VDC	0.7/1 0.7/2 0.7/4 0.5/5 0.3/8 0.15/10 0.1/15
86BYGH450A-02M	70VDC	2.1/1 1.9/2 1.5/4 1.1/6 0.8/8 0.6/10 0.2/15
86BYGH450B-02M	70VDC	4.0/1 3.7/2 2.8/4 2.2/6 1.6/8 1.2/10 0.5/15
86BYGH450C-02M	70VDC	6.2/1 6.0/2 5/4 3.8/6 2.6/8 2.0/10 0.6/15
110STH115-6004B	150VDC	9.5/1 9/3 8/5 7.5/7 7/10 4/15 3/20
110STH150-6004F	150VDC	16/1 14/2 10/5 7/7 6.5/10 3.5/15 2.5/20